

1858 FM 699  
Carthage, TX 75633  
(903) 693-5633  
Fax 903-693-5669

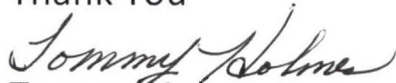
March 10, 2022

Panola County Courthouse  
110 Sycamore Street  
Carthage Texas 75633

We are pleased to bid Cabinets at Panola County Courthouse for locked Storage of election ballots and equipment. Cabinets will be located on the third floor of the Courthouse. We made a walk through on March 3 & 4<sup>th</sup> and made drawings to show all cabinets and lay out. Cabinets will be Maple with flat panel doors and draw fronts. There will be 110 doors and drawers with locks keyed alike. Drawer slides will be 200 lb. Capacity with 4-inch wire pulls. Cabinets will be sealed out natural with 2 coats of sealer and 2 coats of conversion varnish are lacquer.

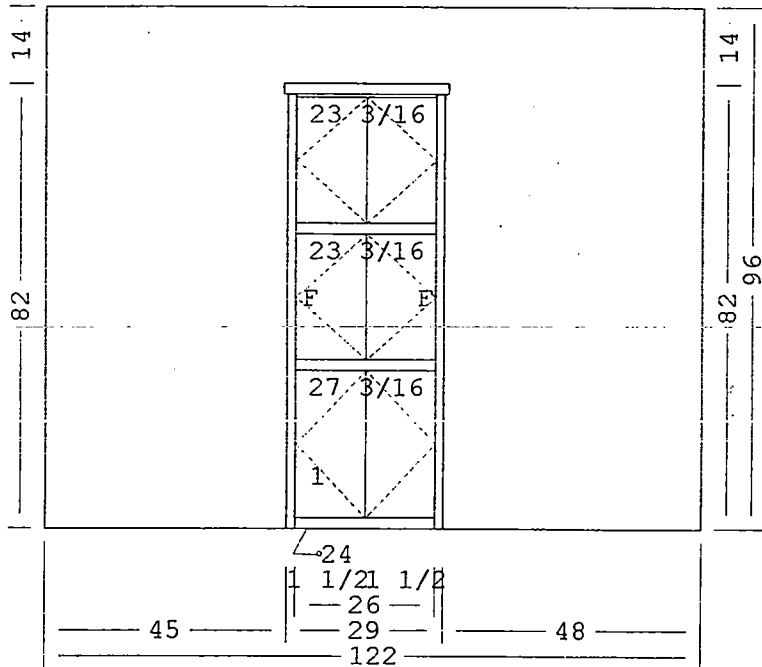
Cabinets installed	42,336.00
Sealed and finished	<u>4,180.00</u>
Total Price	46,516.00

Thank You

  
Tommy Holmes



1 of 4 Cabinets



Cabinet Report

Cabinet Name	Width	Height	Depth	A	C
1-PANTRY	29	82	24		

Holmes Millwork Inc  
 1850 FM 699  
 Carthage Texas 75633  
 Phone: 903 693 5633 Fax: 903 693 5669

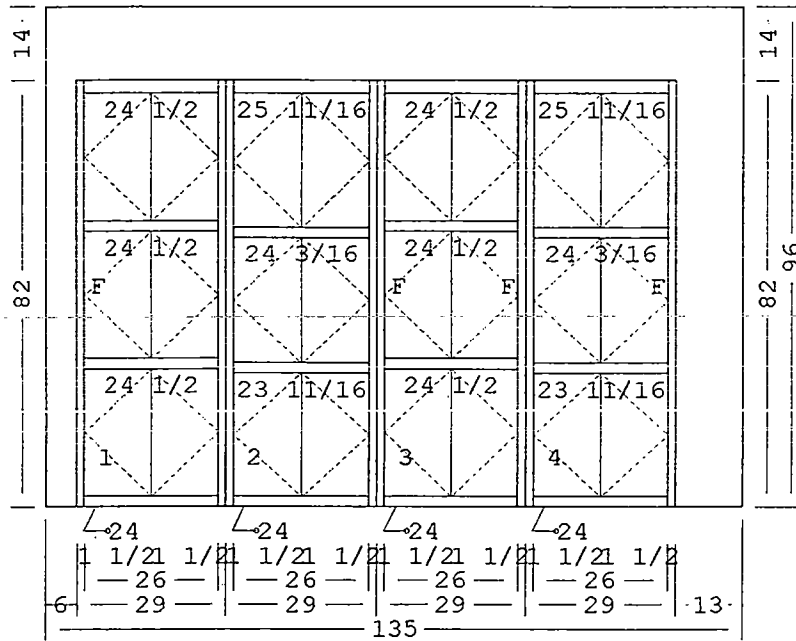
Courthouse Storage #2

Elevation - Wall 1

Room 1

Current Date: Mar 09, 2022

Scale: NTS



Cabinet Report

Cabinet Name	Width	Height	Depth	A	C
1-SPECIAL	29	82	24		
2-SPECIAL	29	82	24		
3-SPECIAL	29	82	24		
4-SPECIAL	29	82	24		

Holmes Millwork Inc  
 1850 FM 699  
 Carthage Texas 75633  
 Phone: 903 693 5633 Fax: 903 693 5609

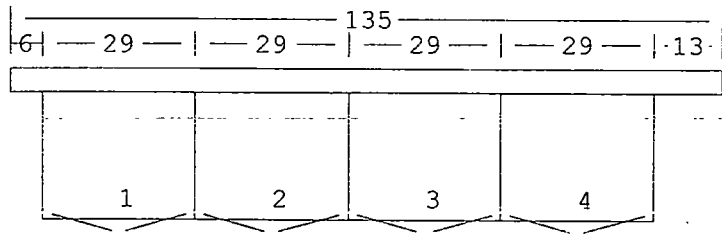
Courthouse Storage #2

Room 1

Elevation - Wall 1

Current Date: Mar 09, 2022

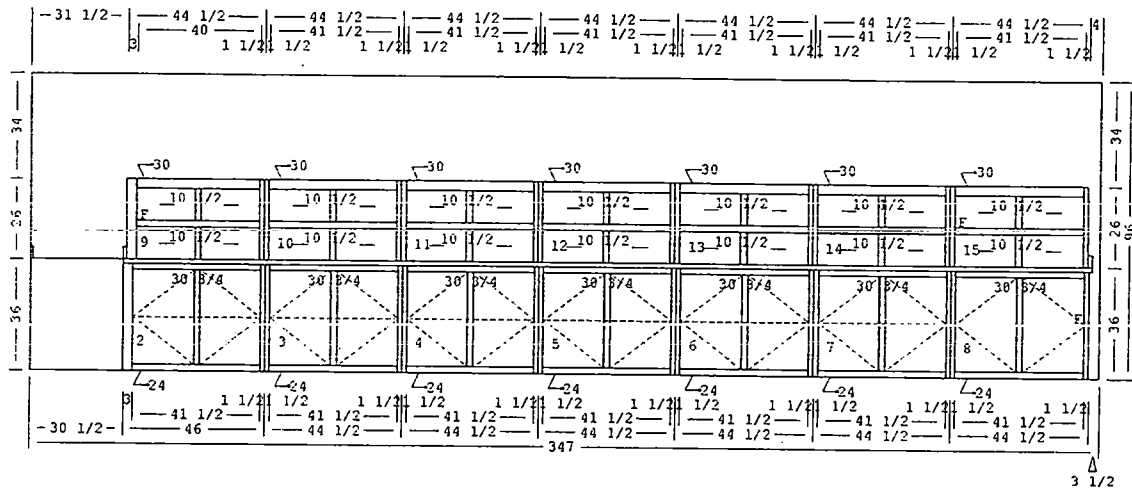
Scale: NTS



Cabinet Report

Cabinet Name	Width	Height	Depth	A	C
1-SPECIAL	29	82	24		
2-SPECIAL	29	82	24		
3-SPECIAL	29	82	24		
4 SPECIAL	29	82	24		

Holmes Millwork Inc 1850 FM 699 Carthage Texas 75633 Phone: 903 693 5633 Fax: 903 693 5669	Courthouse Storage #2	Floorplan	
	Room 1	Current Date: Mar 09, 2022	Scale: NTS



Cabinet Report

Cabinet Name	Width	Height	Depth	A	C
2-BASE	46	36	24		
3-BASE	44 1/2	36	24		
4-BASE	44 1/2	36	24		
5-BASE	44 1/2	36	24		
6-BASE	44 1/2	36	24		
7-BASE	44 1/2	36	24		
8-BASE	44 1/2	36	24		
9-UPPER	44 1/2	26	30		
10-UPPER	44 1/2	26	30		
11-UPPER	44 1/2	26	30		
12-UPPER	44 1/2	26	30		
13-UPPER	44 1/2	26	30		
14-UPPER	44 1/2	26	30		
15-UPPER	44 1/2	26	30		

Holmes Millwork Inc  
 1850 FM 699  
 Carthage Texas 75633  
 Phone: 903 693 5633 Fax: 903 693 5669

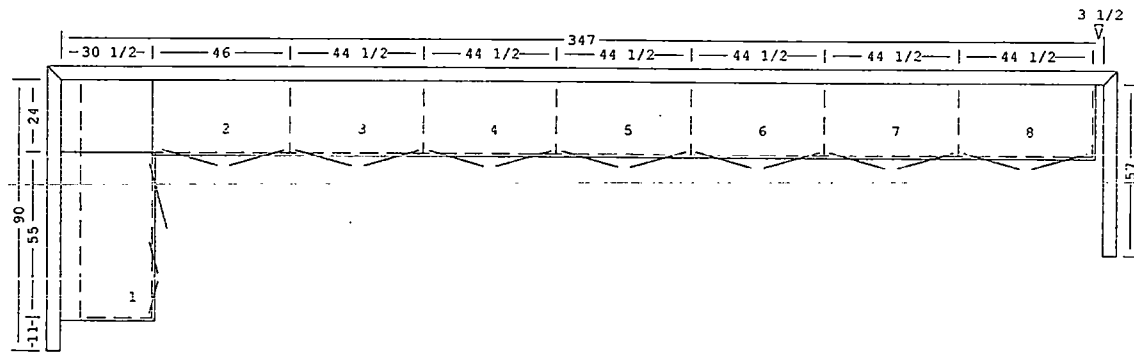
PANOLA COUNTY COURTHOUSE

Room 1

Elevation - Wall 2

Current Date: Mar 06, 2022

Scale: NTS



Cabinet Report

Cabinet Name	Width	Height	Depth	A	C
1-BASE	55	36	24		
2-BASE	46	36	24		
3-BASE	44 1/2	36	24		
4-BASE	44 1/2	36	24		
5-BASE	44 1/2	36	24		
6-BASE	44 1/2	36	24		
7-BASE	44 1/2	36	24		
8-BASE	44 1/2	36	24		

Holmes Millwork Inc  
 1850 FM 699  
 Carthage Texas 75633  
 Phone: 903 693 5633 Fax: 903 693 5669

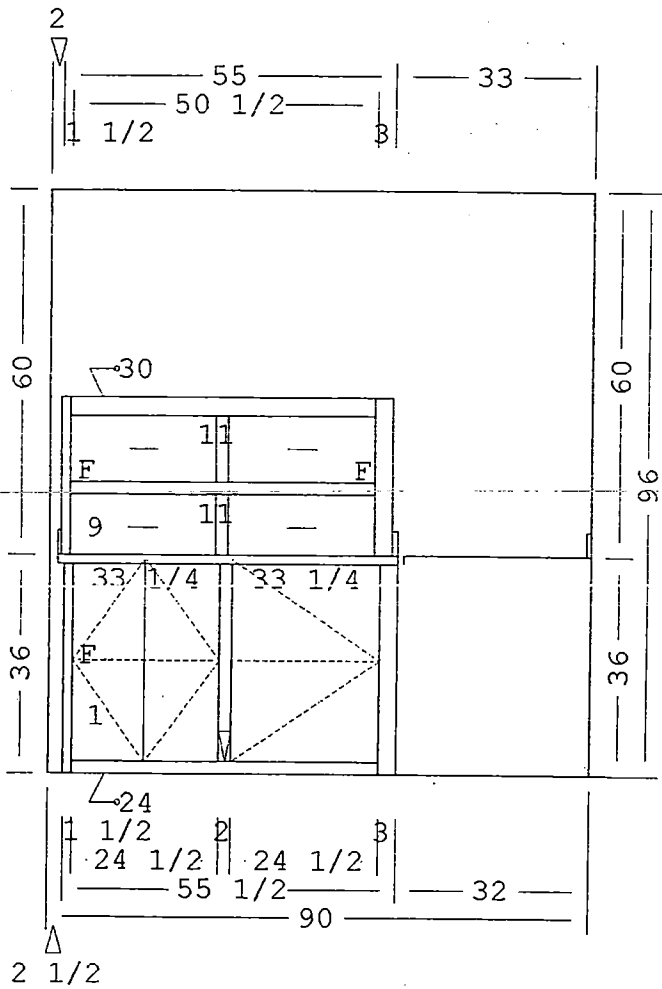
PANOLA COUNTY COURTHOUSE

Floorplan

Room 1

Current Date: Mar 08, 2022

Scale: NTS



Cabinet Report

Cabinet Name	Width	Height	Depth	A	C
1-BASE	55 1/2	36	24		
9-UPPER	55	27	30		

Holmes Millwork Inc  
 1850 FM 699  
 Carthage Texas 75633  
 Phone: 903 693 5633 Fax: 903 693 5669

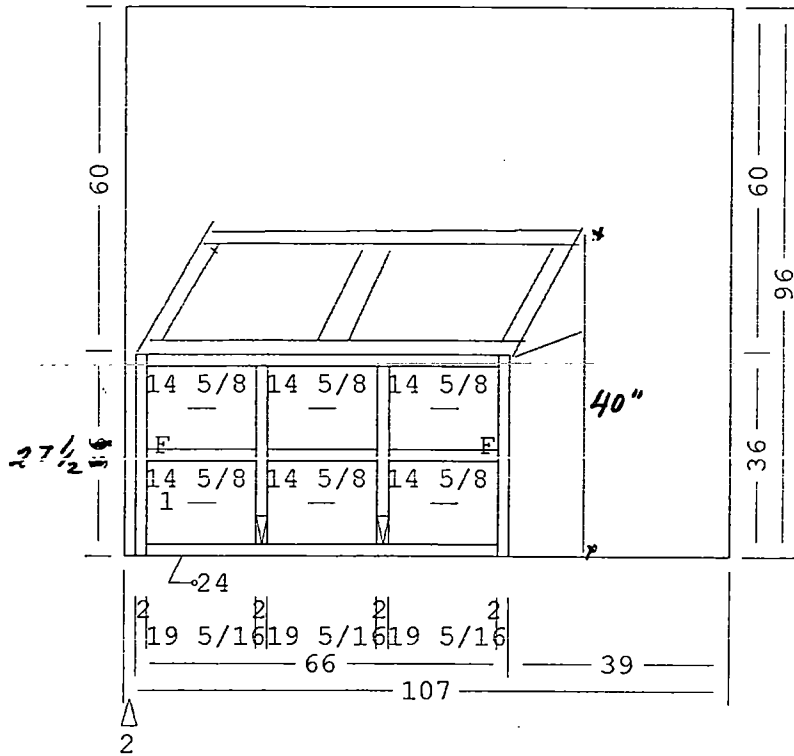
PANOLA COUNTY COURTHOUSE

Elevation - Wall 1

Room 1

Current Date: Mar 08, 2022

Scale: NTS



Cabinet Report

Cabinet Name	Width	Height	Depth	A	C
1-BASE	66	36	24		

Holmes Millwork Inc  
 1850 FM 699  
 Carthage Texas 75633  
 Phone: 903 693 5833 Fax: 903 693 5669

Courthouse Display Cab

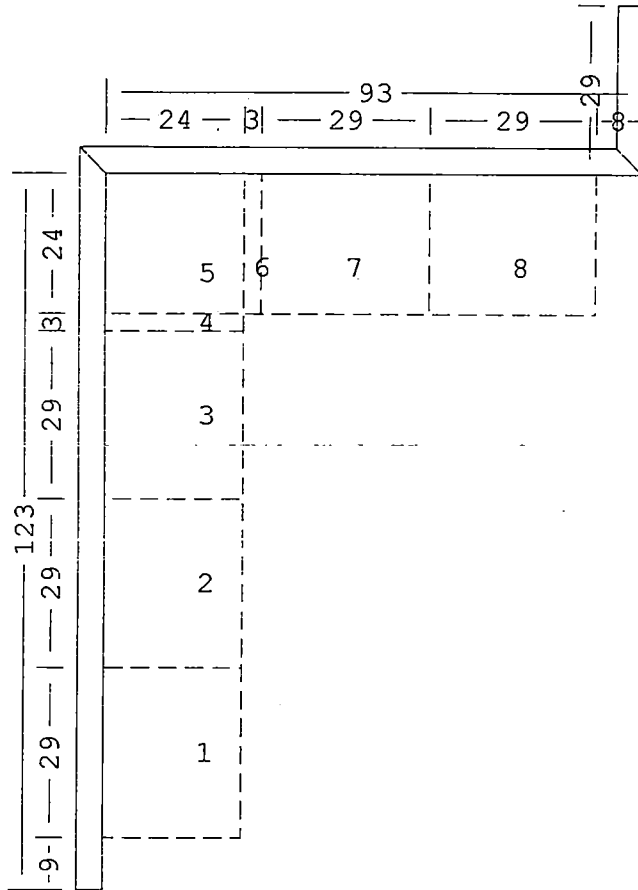
Elevation - Wall 2

Room 1

Current Date: Mar 09, 2022

Scale: NTS





### Cabinet Report

Cabinet Name	Width	Height	Depth	A	C
1-BASE	29	54	24		
2-BASE	29	54	24		
3-BASE	29	54	24		
4-BASE FILLER	3	54	24		
5-BASE	24	54	24		
6-BASE FILLER	3	54	24		
7-BASE	29	54	24		
8-BASE	29	54	24		

Holmes Millwork Inc  
 1850 FM 699  
 Carthage Texas 75633  
 Phone: 903 693 5633 Fax: 903 693 5669

Court House 2-A

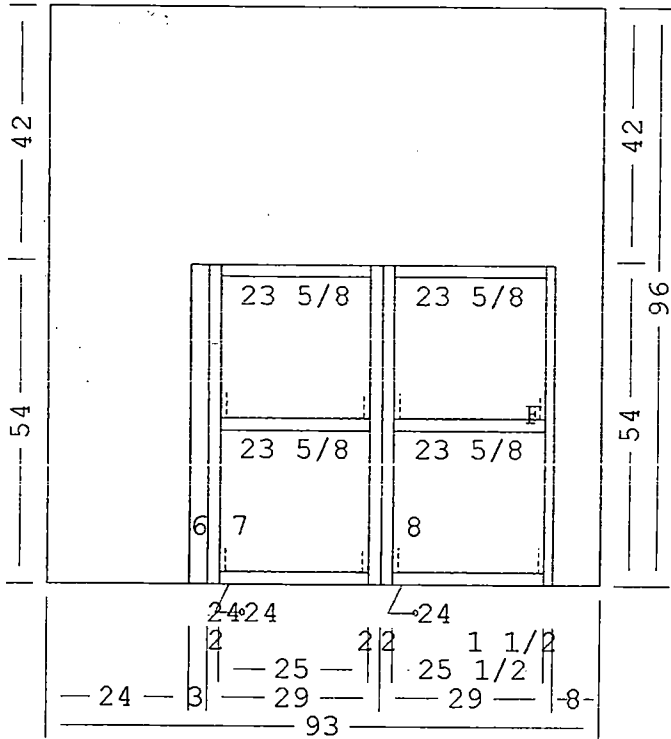
Floorplan

Room 1

Current Date: Mar 09, 2022

Scale: NTS





Cabinet Report

Cabinet Name	Width	Height	Depth	A	C
6-BASE FILLER	3	54	24		
7-BASE	29	54	24		
8-BASE	29	54	24		

Holmes Millwork Inc  
 1850 FM 699  
 Carthage Texas 75633  
 Phone: 903 693 5633 Fax: 903 693 5669

Court House 2-A

Room 1

Elevation - Wall 2

Current Date: Mar 09, 2022

Scale: NTS